

Scoring animal welfare



ICAR Congress 2019, Prag

B. Luntz, D. Krogmeier

Bavarian state research center for agriculture

Trial: Scoring animal welfare criteria by the group of classifiers in Bavaria

Beginning in January 2017 to October 2017

29.636 Fleckvieh (Simmental) cows, 1. lactation

6.068 different farms

Criteria on a 5 step scale:

- Locomotion
- Pollution/ Contamination
- Integument damage



Definition of the welfare criteria

Trait scale	Integument Damage	Pollution	Locomotion
1	Very conspicuous changes in the rear legs	Heavy soiling in the hindquarters	Cow walks hesitantly and spares one or more legs, head low, curved steps
2	Larger hairless parts at the hocks and or thicker at one or both legs	Clear contamination at the whole legs behind	Cow walks unevenly or with distinct skating movement, head lower
3	Larger hairless areas, 2-5 cm	Detectable contamination	Cow walks, legs not quite parallel, head partly lowered
4	Very small hairless parts, > 2 cm	very less contamination	Cow walks fluidly, back straight, head is up
5	Absolutely no hairless spots	Very clean	Cow walks very fluidly large spaced steps





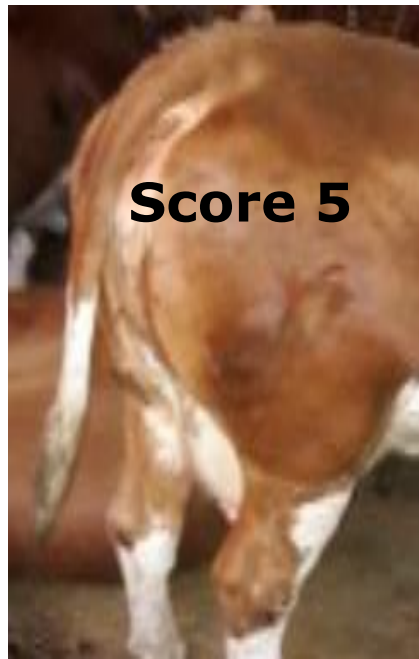
Score 5



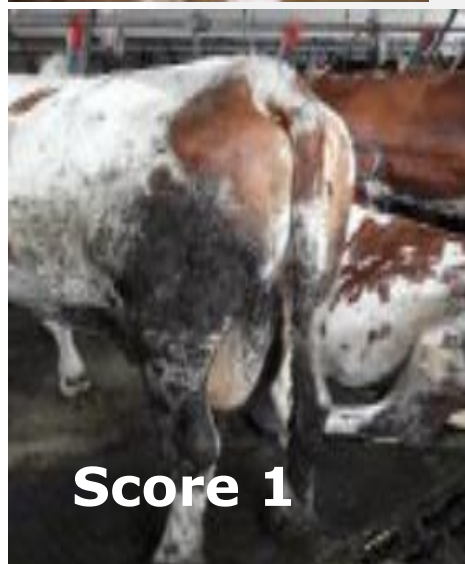
Score 3



Score 1



Score 5



Score 1



Additional facts:

- ❖ *Type of the barn*
- ❖ *Herd size*
- ❖ *Average milk per cow*

**Thank you
to LKV Bayern**

Fixed stables

Walking stables

High boxes

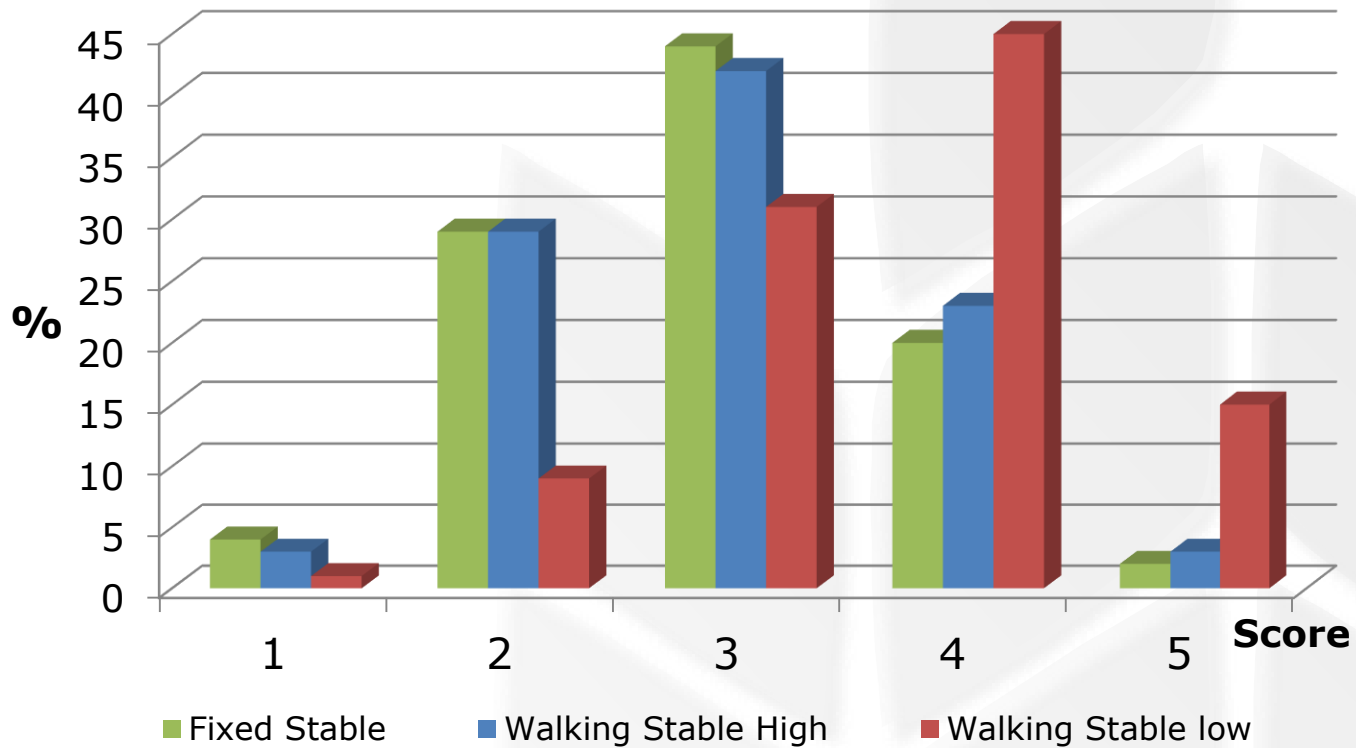
Flat boxes

Flat floor

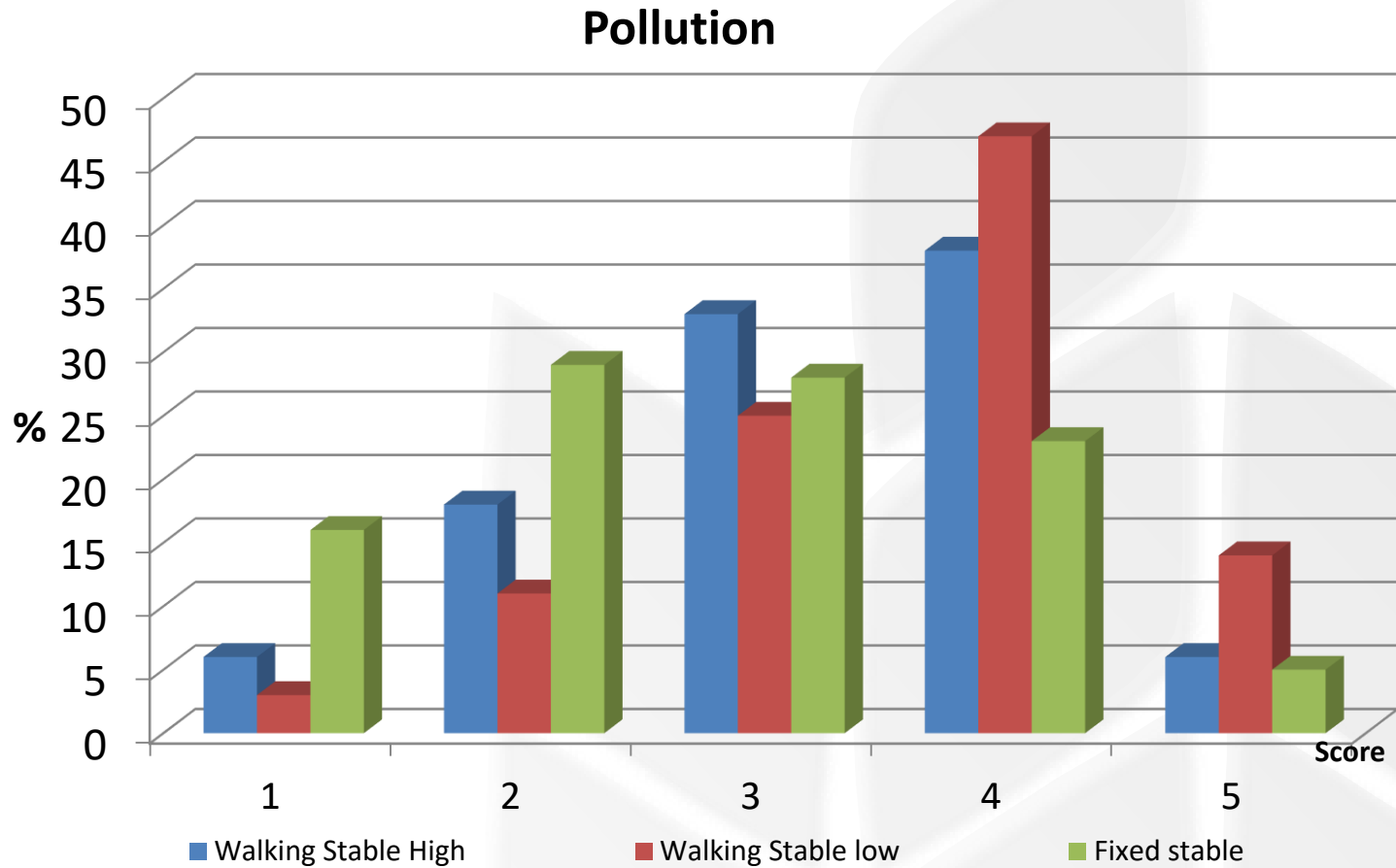
Clafter floor

Results

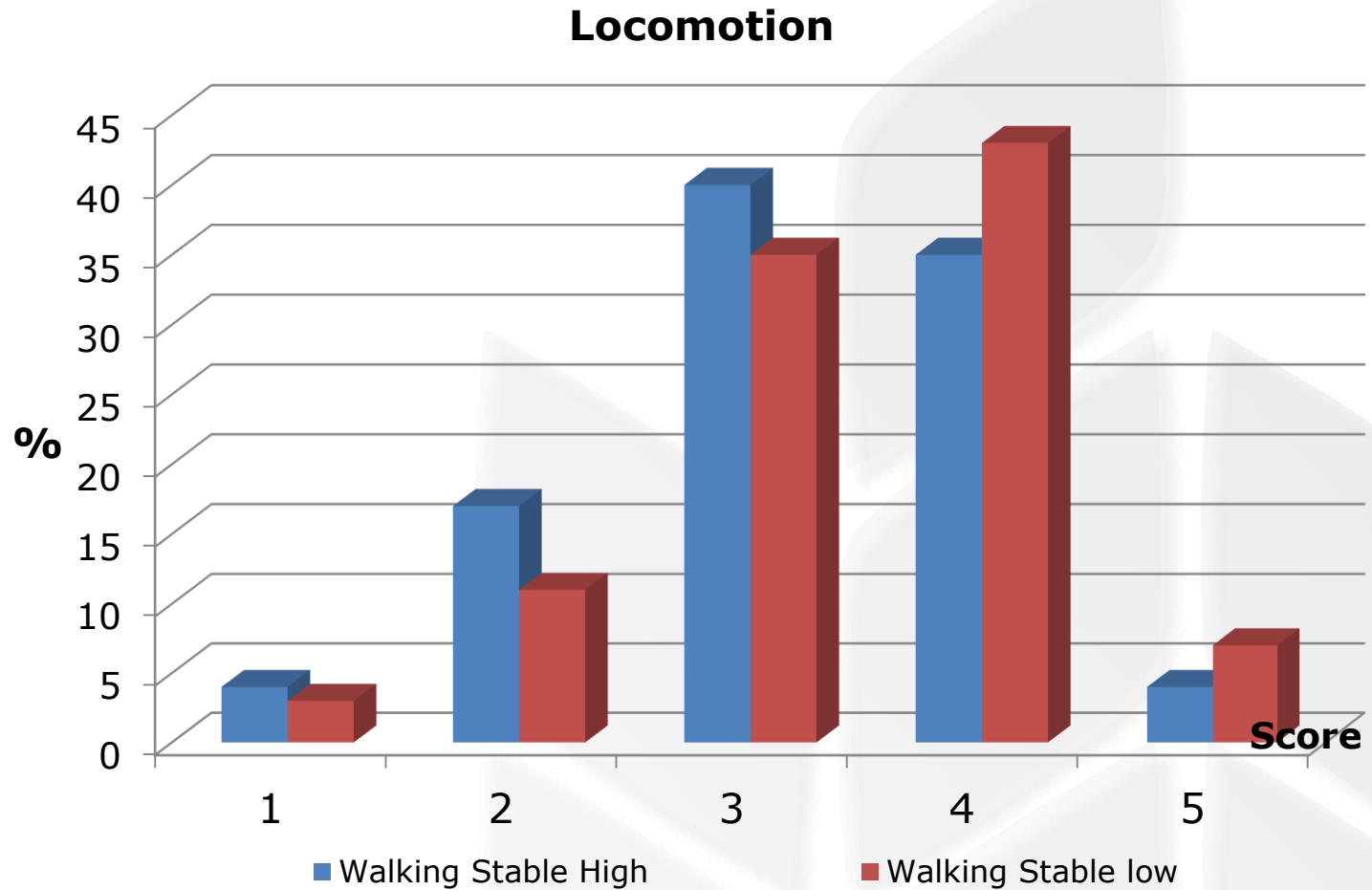
Integument



Results



Results



Conclutions

- a collection of data via conformation test is possible
- the data should be anonymous
- there are big differences between the stable systems
- fixed stables are not worse in all criteria automatically
- the correlation to the standard traits for feet and legs are high
- bigger herds have more problems with integument and locomotion but not in pollution
- higher milk yield does not influence the welfare criteria negativ

Thank you so much for attention

